

LOCATOR-I[®]

HIGH DENSITY PROBE FIXTURE



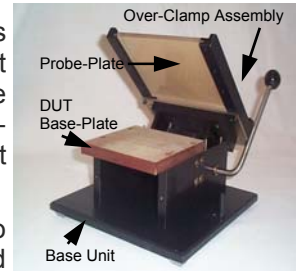
Introduction

The dramatic proliferation of smaller and smaller Electronics' products, is a direct result of significant advances in IC packaging technology (i.e., Chip On Board, Multichip Modules, Flip Chip, Flex and Hybrid Circuits).

ProbeStar developed the LOCATOR-I[®] test fixture, to help Manufacturers cope with the difficulty of accessing very fine pitch circuits.

Description

The basic LOCATOR-I[®] fixture kit is comprised of two sections, a Base Unit and an Over-Clamp Assembly. The Base Unit supports both the DUT Base-Plate, and a Mechanical Engagement Assembly.



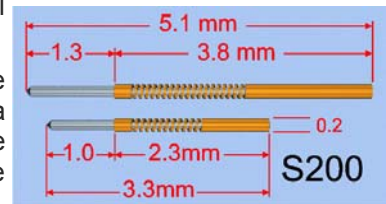
The Over-Clamp Assembly attaches to the Base Unit, and provides a standard 6"x5" Probe-Plate. The DUT Base-Plate (5"x5"), is made of phenolic material and is easily modified to house the DUT. The Probe-Plate is made of plastic, and is also easily modified to accommodate the desired drill pattern and quantity of spring probes (pogo pins).

The Mechanical Engagement Assembly uses a "slot machine" arm to achieve a two-stage motion. The first stage moves the Probe-Plate to a position that is exactly parallel, over the DUT Base-Plate. The second stage of motion forces the two sections together through a set of guide posts that causes the

probes to accurately align to test points on the DUT. Making electrical contact with the spring probes is made through a special PCB, that is mounted to the top of the Probe-Plate. The PCB can also contain custom circuits and Header connectors for interfacing to external test equipment.

The crowning jewels of the LOCATOR-I[®], are the S200 Series spring-probes from Alpha Test. The S200 Series are some of the smallest probes in the industry, and enable the LOCATOR-I[®], to achieve **0.25mm** fine-pitch spacing. Because of their size, the probes exhibit good high frequency characteristic and crosstalk immunity. This is important when building fixtures for mix-signal RF(analog) or fast digital test applications.

To support your custom fixture needs, ProbeStar employs some of the best and brightest Engineering talent available (including electrical, electronic, and mechanical). Couple that with our close association with AlphaTest (the spring probe experts), and rest-assured that you will receive complete satisfaction.



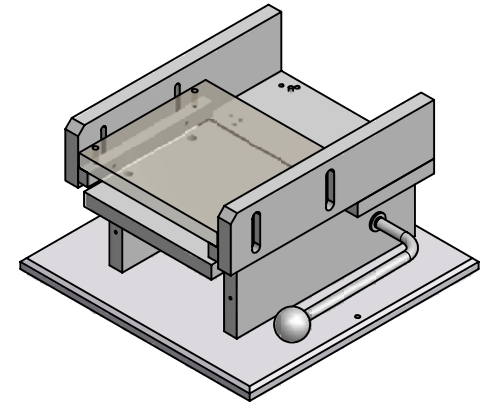
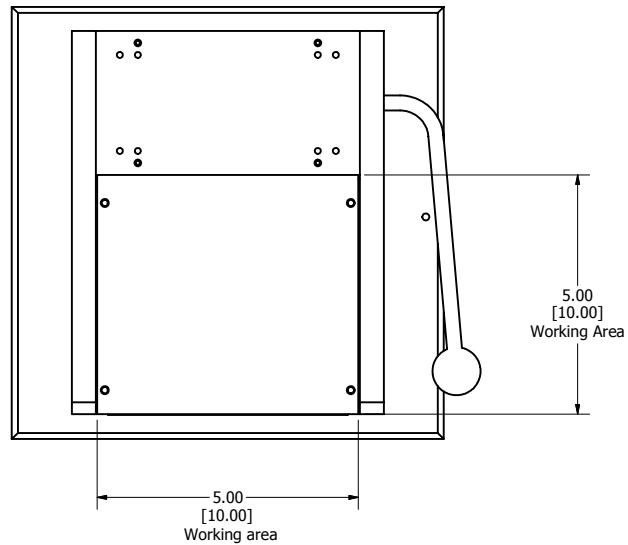
Special Features:

- ★ Easy to use
- ★ Precise probe alignment
- ★ Re-usable mechanical base
- ★ High density probe area
- ★ Solid metal construction
- ★ Large area for custom interface circuits
- ★ Over-clamp detection switch
- ★ Simple to service and maintain
- ★ Full one year warranty
- ★ ProbeStar ADVANTAGE[®] Program (we will custom build a complete "turn-key" solution to your exact specifications)

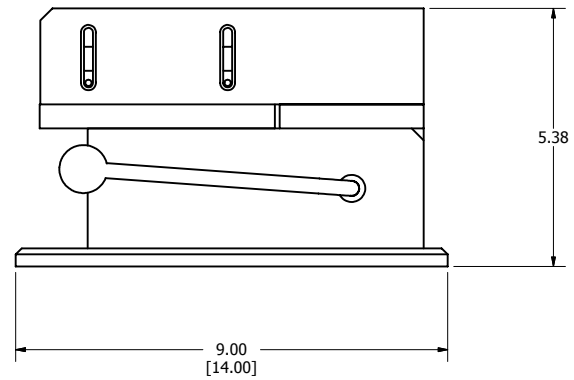
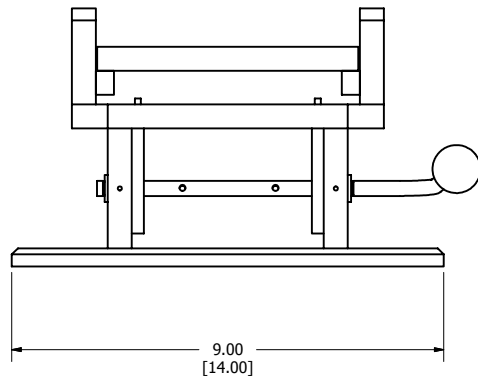
©2001 ProbeStar, Inc. All rights reserved. All information contained herein is believed to be accurate. No responsibility is assumed for its use. ProbeStar, Inc., reserves the right to make changes to product design, product components, and product manufacturing methods without notice. Other product options may be available. MARCOM#052812-00



ProbeStar, Inc
2391 Zanker Rd, #340
San Jose, CA 95131
(408) 435-TEST (8378)
info@probestar-usa.com
www.probestar-usa.com



Conceptual design shown.
Actual fixtures may differ slightly.



Note: 5 x 5" working area model shown.
5 x 10" and 10 x 10" working area
models available, as indicated by
bracketed dimensions.

DRAWN Rick Van Rensselaer		4/23/2005		Probestar		
CHECKED						
QA				TITLE		
MFG				Locator 1 fixture		
APPROVED				SIZE	DWG NO	REV
				C	Locator 1 fixture	
				SCALE	SHEET 1 OF 1	